

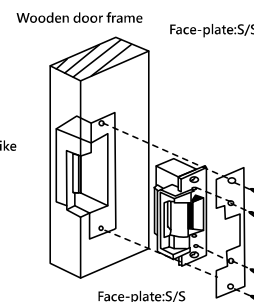
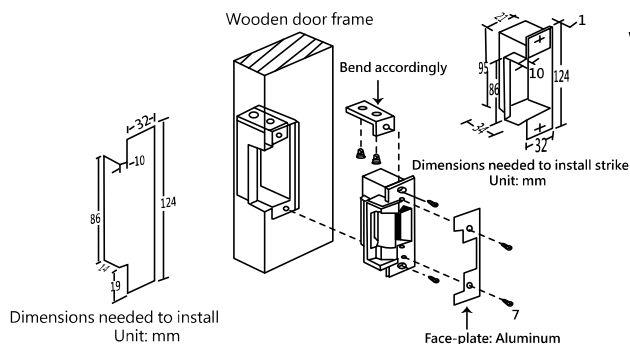
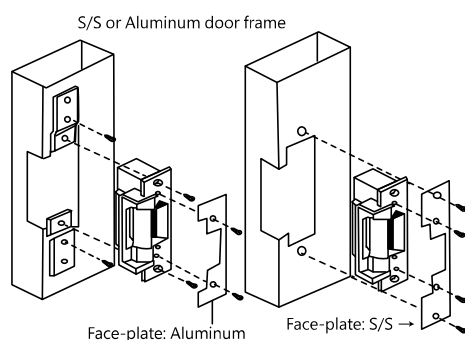
DEL1335



General Feature

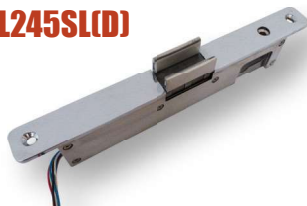
- ★ Dimensions: 125L x 32W x 38D mm
165L x 32W x 38D mm (SDEL1335)
- ★ DEL1335/DEL1335F Fail Secure/Fail Safe
- ★ Current: 400mA/12VDC, (F) 200mA/12VDC
200mA/24VDC, (F) 100mA/24VDC
- ★ Face Plates:
DEL1335(F) - Aluminium
SDEL1335 - Stainless steel (165mmL)
- ★ Keep Depth: 16mm

DEL1335 INSTALLATION

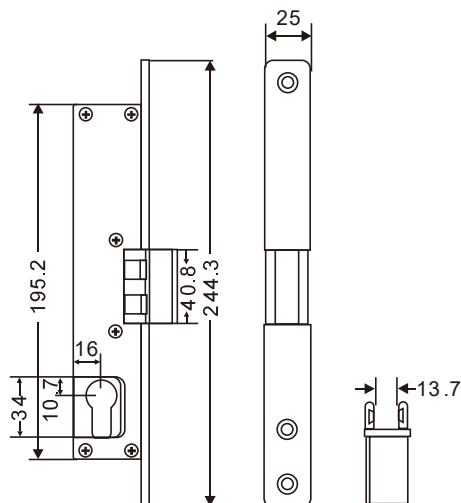


FRAMELESS SERIES

DEL245SL(D)



DEL245SLD DIMENSION



General Feature

- ★ DIMENSIONS:
DEL245SL: 245L x 25W x 41D mm
- ★ Mode:
DEL245SL Double-swing glass door (dual mode) fail secure w/lock sensor
DEL245SLD Double-swing glass door (dual mode) w/lock & door sensor
- ★ Glass thickness: 8~12mm
- ★ Current: 300mA/12VDC / 150mA/24VDC
- ★ Fail Safe/Fail Secure:
Site convertible from one mode to the other (Fail secure default, unless specify on order)
- ★ Option:
Lock Cylinder for Emergency opening in Fail Secure Mode
- ★ Application:
1. Application to frameless glass door only
2. Bi-directional locking function

INSTALLATION

